



The Energizer

MAY 2025 | STEUBEN RURAL ELECTRIC COOPERATIVE

LINEWORKERS ARE WIRED FOR SERVICE

Cherry Creek District Lineworkers

National Lineworker Appreciation Day, celebrated on the second Monday of April, is a time to thank and honor lineworkers who work to ensure reliable electric service for members of electric cooperatives.

In the quiet hours before dawn breaks, while many of us are still nestled in our beds, lineworkers begin their day, often clad in flame-resistant clothing, safety goggles, rubber gloves, and thick, heavy boots.

They are the individuals who epitomize dedication to service in its purest form. As we celebrate Lineworker Appreciation Day on April 18th, this is an important moment to reflect on the essential role they play in our daily lives.

Amid towering utility poles and power lines, lineworkers exhibit a strength that goes far beyond the physical. Whether battling inclement weather, troubleshooting technical problems or navigating treacherous heights, lineworkers demonstrate resilience and a quiet determination to keep our lights on, our homes comfortable, and our communities connected.

Steuben Rural Electric Cooperative crews travel across our 3 county service territory, building, maintaining and repairing parts of our local system. Their extraordinary skills ensure our homes remain connect to the grid, businesses stay operational, and emergency services remain accessible - a lifetime that connects us all.

In moments of crisis, when the lights go out and we find ourselves in the dark, lineworkers emerge as beacons of hope. Their swift response restores normalcy, offering reassurance in times of uncertainty. Whether repairing storm-ravaged power lines or ensuring continuity during emergencies, their unwavering commitment illuminates life when we need it most.

Steuben Rural Electric Cooperative lineworkers also answer the call



beyond the boundaries of home. Our crews travel to fellow cooperatives, near or far, when widespread outages occur and additional support is needed. Cooperation among cooperatives is one of our seven guiding principles, and no one embodies this core commitment better than lineworkers.

In April, as we celebrated the remarkable men and women who ensure reliable power, let's recognize their unwavering dedication to the local communities they serve.

We also acknowledge their families for the many sacrifices they make throughout the year.

The next time you flip a switch, please take a moment to remember those who make it possible - lineworkers, who are wired for service and dedicated to illuminating life.

Our Professional Requirements

- **Communication:** SREC lineworkers must communicate effectively with cooperative members to solve power problems and meet electric utility needs.
- **Physical:** Lineworkers work to determine and assure adherence to prescribed operating and safety standards. They participate in regular safety meetings, trainings, and tests.
- **Mental Work:** Lineworkers read and interpret construction plans and schematics related to the installation of electrical power distribution lines.
- **Knowledge:** A lineworker must have complete knowledge of the methods, techniques, materials, and equipment of the electrical trade, and the basic laws and regulations governing electrical work.
- **Ability:** Lineworkers must know how to use the safety procedures and equipment associated with working on high-voltage electrical lines and equipment.

Bath Office, 9 Wilson Avenue, Bath, NY 14810

Phone: (607) 776-4161 or (800) 843-3414

Office Hours: Monday - Friday 7:30 am - 4:00 pm

CC Office, 5966 South Rd, Cherry Creek, NY 14723

Phone: (716) 296-5651 or (800) 883-8236

Office Hours: Monday - Friday 7:00 am - 3:30 pm

Our Heroes Wear Hard Hats

NATIONAL LINEWORKER APPRECIATION DAY IS APRIL 18TH



Bath District Lineworkers



Bath District Office Administrative Professionals

Throughout April, the nation celebrates electric lineworkers by highlighting the dedication, hard work, and pride they exemplify each day. These lineworkers face immense risks. They often do their jobs in the most dangerous weather conditions. 243002



Cherry Creek District Lineworkers



Bath District Employee

ADMINISTRATIVE PROFESSIONAL DAY

Wednesday, April 23, 2025 is Administrative Professional Day!. This holiday was created by the president of the National Secretaries Association, Mary Barrett, in the late 1940s and early 1950s.

In 1952, U.S. Secretary of Commerce Charles Sawyer declared the first week of June to be Secretaries Week, and the Wednesday in that week to be Secretaries Day. Secretaries Week was then changed to the last week of April. In 1981, the day was changed from secretaries day to Administrative Professionals Day to incorporate not only secretaries into the holiday but a myriad of professional and administrative assistants.

The professional and administrative employees at SREC, play a huge role in making sure the cooperative runs smoothly. These employees wear many hats, from handling appointments, speaking with members, and managing paperwork, just to name a few.

However, most of their work goes unnoticed and not many people are aware of the skills required to do their jobs well. Administrative Professionals Day aims to thank those who work as secretaries, assistants, and other employees who try their best at everything they do.

We say thank you to all those who provide support. You are greatly appreciated.

*Thank
you*

Electrical Safety Every Day

Electricity lights homes and businesses, provides warmth and keeps appliances and equipment running smoothly. During Electrical Safety Month, Steuben Rural Electric Cooperative and Safe Electricity provide these electrical safety tips to avoid hazards both inside and outdoors.

- Never allow any part of your body to come into contact with an electric circuit.
- Make sure all outside outlets are ground-fault circuit interrupter (GFCI) protected.
- Docks wired for electricity should be inspected by a licensed professional to ensure no electrocution hazards are on the dock or created within the surrounding water.
- Stay vigilant by being aware of your surroundings, looking up and around to gauge your proximity to power lines and utility equipment.
- Keep children away from pad mount utility transformers, junction boxes, and from flying toys near power lines to avoid potential hazards.
- Avoid attempting to move downed power lines or clear trees from power lines, as downed power lines can energize the ground up to 35 feet away.
- Maintain a safe distance of at least 10 feet in all directions between farm equipment, ladders, irrigation pipes, and overhead power lines or the service entrance lines to your home or building. 275502
- When you see lightning, take shelter inside the house or hard-topped vehicle for protection. Stay away from high places, and do not take shelter under an isolated tree.
- Remember that electricity and water are a dangerous mix, so keep electric devices away from pools and have dock wiring inspected by a professional to prevent electrocution hazards.
- Avoid nailing, tacking, or stapling notices to power poles to prevent hazards to lineworkers and potential damage to protective gloves.
- If your vehicle hits a power pole, stay inside to prevent creating a circuit for electricity to flow through your body. If you need to exit due to a fire, leap out with both feet together and shuffle at least 45 feet away. Warn others to stay clear and call 911 for assistance.
- When working with electrical equipment inside the house, beware that electrical equipment can spark when flammable vapors, gases or dust are present.
- Do not overstretch a cord or use frayed or damaged cords.
- Have a qualified electrician check for hazards if you notice the following: dimming lights, a sizzling or buzzing sound, the smell of warm plastic, a switch plate that feels warm or looks scorched, sparks when plugging in or unplugging items or circuits that trip often.

When dealing with electricity, prioritizing safety is crucial. While Electric Safety Month falls in May, it is essential to maintain safety throughout the year. For more information on electrical safety, visit SafeElectricity.org.

ELECTRICITY 101

To stay safe around electricity, start with these **SEVEN** basic tips:

1.



DON'T OVERLOAD OUTLETS OR CIRCUITS

Plugging in too many items or drawing too much power on a circuit can cause overheating, fire, and damage to devices.

2.



DON'T USE FAULTY ELECTRICAL CORDS OR PLUGS

Do not use cords that look frayed, worn or cracked. Do not use broken plugs. Never remove the grounding pin from a three-pronged plug.

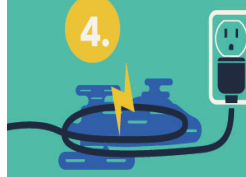
3.



HAVE YOUR ELECTRICIAN'S NUMBER IN YOUR PHONE

Most electrical repairs or installations are not DIY projects. Hire an expert to avoid serious injury or wiring problems.

4.



BE CAREFUL AROUND H₂O

Never use electricity while standing in damp or wet conditions. Keep all electrical devices away from water, including cell phones that are charging.

5.



EVALUATE YOUR APPLIANCES

Do not use appliances in disrepair. Older or broken appliances can overheat, start a fire, and cause serious injuries.

6.



TEST YOUR GFCIs

Outlets near a water source should be equipped with GFCIs, which help prevent shock and electrocution caused by ground faults. Test monthly to make sure they are working.

7.



MAKE SURE YOUR HOME IS UP TO CODE

Your home should be properly wired and electrically sound. Contact a reputable electrician to evaluate your home.

MEMBER DISCLOSURE CONSENT FORM

The Federal Trade Commission (FTC) requires many business and organizations to implement an identity theft prevention program in their day-to-day business operations. SREC adheres to the FTC’s *Red Flag Rules* to protect our members’ information. The data privacy of our members is very important to us, and you may be asked to provide additional information and identification when you make inquiries on your account.

A member may complete an *Member Disclosure Consent* form to allow SREC to give account information to anyone other than the member themselves. The authorized user is permitted to make inquiries on the account which they are authorized on. An authorized user can inquire about the balance or pay on the account. He or she is not authorized to start or stop service, change information (such as mailing address), not entitled to unretired capital credits, nor is he or she financially responsible for the account. The forms can be found on our website at www.steubenrec.coop.



**STEUBEN RURAL
ELECTRIC COOPERATIVE
ANNUAL MEETING**

Mark your calendar for
SATURDAY, OCTOBER 18, 2025

Campbell-Savona High School
Pine Valley High School
Registration 9:00-11:00am
Business Meeting 11:00am

We look forward to having you join us!

COOPERATIVE NEWS

Director Nominations Now Open for Districts 1, 2, and 9

Would you like to serve as a Director on the Steuben Rural Electric Cooperative Board for your district? Steuben Rural Electric Cooperative is governed by a nine-member Board of Directors elected by our membership. The cooperative’s service territory is divided into nine districts, with each district represented by a director who resides in that district. Directors elected serve a three-year term. This year we will have an election for directors for Districts 1, 2 and 9.

- District 1** includes the townships of: Wayland, Cohocton, Fremont, Avoca, Hornellsville, Hartsville, Greenwood, and West Union.
- District 2** includes the townships of: Cameron and Howard.
- District 9** is Chautauqua County.

Any member meeting the qualifications as specified in the Bylaws of Steuben Rural Electric Cooperative may become a candidate for election to the Board by contacting the nominating committee member for that district. SREC’s Bylaws can be found at www.steubenrec.coop/bylaws. The election takes place at the Annual Meeting on Saturday, October 18, 2025.

Please call 607-776-4161 ext. 2118 or stop by one of our offices if you have questions on the nominating process or about becoming a director.

Notice of Customer Charge Adjustment

Steuben Rural Electric Cooperative will be implementing a modest adjustment to the monthly customer charge across all rate classes. Effective on July billing statements, the customer charge will increase by \$1.00.

This customer charge is designed to recover some of the fixed costs associated with maintaining and operating the Cooperative’s distribution system to ensure reliable electricity is delivered to your home or business. Fixed costs are expenses that do not change with the amount of electricity a member uses. These costs are necessary to operate and maintain the electric system, regardless of usage levels.

A clear example of a fixed cost for Steuben Rural Electric Cooperative is property tax on our distribution infrastructure. In New York State, electric cooperatives are required to pay property tax on the poles, wires, transformers, and substations that make up the electric grid - even though these assets are not buildings or land in the traditional sense.

For example, the Cooperative pays over \$1M dollars annually, in property taxes for the distribution line we operate. These taxes are due every year regardless of whether a member uses 1 kWh or 1,000 kWh of electricity. It’s a cost we must cover to maintain service reliability and comply with state laws. Thus, we must ensure that we recover these fixed costs, regardless of how much electricity our members use. Property tax alone, split among 6,400 meters, equates to over \$13 per member per month and is just one of our many fixed costs.

Below is a summary of the updated customer charges by rate class:

Rate Class	Rate Schedule(s)	Previous Charge	New Charge
Residential	Schedule 1	\$29.95	\$30.95
Net Metering	Schedule 1B	\$29.95	\$30.95
Sm. Commercial	Schedules 2/3B	\$56.20	\$57.20
Lg. Commercial	Schedules 3/3A	\$161.98	\$162.98
ETS - Time of Use	Schedules 13/14	\$22.58	\$23.58

We remain committed to keeping rates as affordable as possible while continuing to invest in safe, reliable electric service. Thank you for your continued support as a valued member of our cooperative.

Steuben REC Drone Inspections

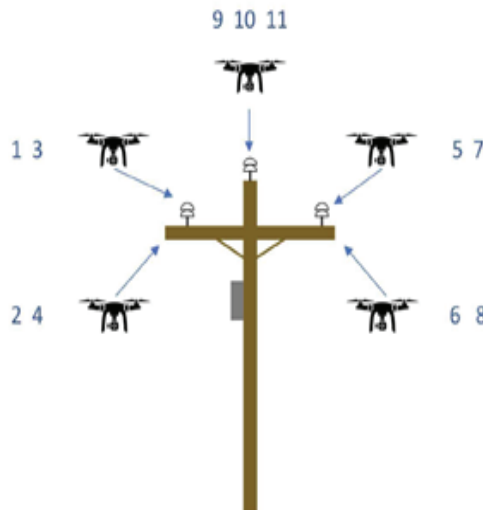
Zeitview will be conducting drone inspections for Steuben REC from late May to early June to enhance the safety and reliability of its infrastructure.

Zeitview, with decades of experience in aerial inspection solutions, will utilize aerial inspection technology to provide a comprehensive evaluation of each facility's components, hardware, and electrical equipment. This advanced approach surpasses traditional ground-based patrols by identifying critical reliability issues such as damaged equipment, evidence of deficiencies, leaking current, and other potential hazards.

By implementing an aerial inspection program, Steuben REC can proactively detect defects before failures occur, ultimately reducing unexpected outages and minimizing operational costs. The aerial inspection solutions leverage cutting-edge technology and expert analysis to deliver superior data, enabling Steuben REC to make informed, data-driven maintenance de-

cisions that enhance system performance and longevity.

Steuben REC is leveraging Federal grant funding to accomplish this inspection, at no cost to our members. Small drones uncover issues that are not visible from the ground by getting an unprecedented birds-eye perspective.



Attaching Items to Utility Poles Present Safety Hazards

Although it may seem innocent, placing signs and other items on utility poles creates a serious safety hazard. Driving down the road you'll see utility poles covered with a wide range of signs.

By attaching items to poles from the tiniest of posters to something as large as a bird house, you are risking the lives of others, especially the line workers whose jobs are already dangerous. It may not sound like a big

deal, but a small nail, tack or screw partially driven into a pole can tear a line worker's glove and clothing, compromising their safety and making them vulnerable to electrocution. A secondary concern is that moisture and insects get into holes surrounding nails, damaging the poles and increasing maintenance costs. The Cooperative appreciates your help in keeping utility poles clear and our line workers safe.

ENERGY EFFICIENCY TIP OF THE MONTH

Routine maintenance is important to keep your refrigerator running efficiently. Lint and dirt should be cleaned from the refrigerator coils every six months to a year, and more often if there are pets in the home.

When coils are coated with lint, dust or pet hair, your refrigerator works harder than it's designed to, which can prevent the appliance from cooling properly and efficiently. The additional work can increase the energy costs of the refrigerator by as much as 35% and shorten the life of the appliance. 294403

Source: energy.gov



MOVE OVER TO KEEP UTILITY WORKERS SAFE

Steuben Rural Electric Cooperative utility employees work on overhead and underground power lines, electric substations, use heavy equipment, and check electric meters every day. Electricity can be extremely dangerous and is one of the biggest hazards our employees encounter, but another big threat is traffic.

DRIVING NEAR WORK ZONES

Oftentimes, utility employees must park alongside a road, turn on flashing lights, and place traffic cones in the roadway as an indication to passing motorists that work is being done. Doing so creates a work zone. It's important to move over when you see flashing lights to keep our cooperative workers safe. Failing to do so endangers the lives of utility workers and other emergency responders.

MOVE OVER LAW

It is New York State law that all drivers take precautions, including slowing down and moving over, to avoid a crash with any vehicle stopped along the roadway. Drivers must use due care when approaching an emergency vehicle or hazard vehicle including police vehicles, fire trucks, ambulances, construction and maintenance vehicles and tow trucks. The Move Over Law applies to both sides of the roadway, not just the shoulder on the right. Failing to do so endangers the lives of utility workers and other emergency responders.

DRIVING IN A ONE LANE WORK ZONE? REDUCE SPEED.

Working along roadways can be dangerous and moving over is the law. If it's not possible to move over one full lane, drivers are required to reduce their speed until their vehicle has completely passed the parked or stopped vehicle.

Steuben Rural Electric Cooperative employees are working to ensure that communities have reliable electric service.



SPRING EFFICIENCY WORD SEARCH

Did you know there are several ways to save energy during spring months? Read the energy-saving tips below to learn more, then find the bolded words in the puzzle below.

E	S	W	Z	S	V	M	P	A	S	M	M	E	Z	R
Y	C	T	Z	I	T	I	B	S	R	D	N	O	L	A
F	K	J	H	Y	N	X	S	U	E	X	U	N	P	I
P	R	K	N	G	R	E	N	F	G	Q	L	J	T	Z
G	Z	I	K	D	I	M	P	E	R	E	X	W	A	S
Q	L	X	L	F	Y	L	P	I	A	Z	Q	C	E	D
F	V	Z	N	X	S	F	D	G	H	U	Z	E	G	X
E	N	E	R	G	Y	M	I	E	C	K	R	N	F	G
B	H	V	J	E	O	F	E	I	L	T	I	C	Q	S
K	P	T	Q	J	J	C	D	L	E	H	G	C	V	I
Q	Z	N	N	C	S	V	Q	D	D	W	P	N	E	M
T	P	T	T	V	L	I	A	U	P	W	X	P	I	F
L	D	R	O	J	A	H	H	I	Q	B	F	F	U	F
C	T	G	B	G	S	P	P	T	G	I	W	K	M	Y
S	W	O	D	N	I	W	R	S	K	M	W	Y	U	K

- Use **LED lights** around your home. LEDs use 75% less energy than traditional incandescent light bulbs.
- Plant **shade trees** around your home to block unwanted heat from the sun.
- Unplug devices and electronics that consume energy when they're not in use, like phone **chargers**.
- Seal air leaks around exterior doors and **windows** to save energy and keep your home comfortable.
- Ceiling fans cool people, not rooms. To save **energy**, turn them off when you leave the room.

Know what's below

Call **811** before you dig.



- | | |
|-------------|---------|
| » Electric | » Gas |
| » Water | » Fiber |
| » Telephone | » Sewer |
| » Cable | 551101 |

HAVE A WELL?

USE IT TO SAVE THOUSANDS ON YOUR HEATING & COOLING COSTS

\$100 AVERAGE MONTHLY
ENERGY SAVINGS
-\$40 AVERAGE MONTHLY
FINANCING
\$60 IN YOUR POCKET
EVERY MONTH

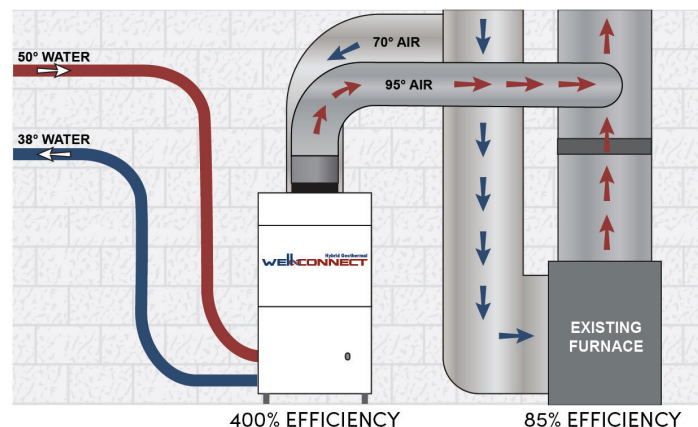
WELL-CONNECT® Geothermal Made Affordable

 **FAMILY OWNED
AMERICAN MADE**

WHY WELL-CONNECT?

Well-Connect is a clean energy solution for homeowners to drastically reduce the expense associated with burning traditional fossil fuels.

It works with an existing furnace, it does not replace it, making it an affordable add-on solution.



\$3,000 SREC/NYSERDA REBATE
PLUS 30% FEDERAL TAX CREDIT AND 25% NY STATE INCOME TAX CREDIT

**Well-Connect Hybrid Geothermal
Steuben Rural Electric Cooperative**

No Home Visit Required for a Free Estimate



**Your Local Well-Connect
Installer**

**Value Geothermal
Canisteo, NY
(607) 290-3559**

THE TRADING POST

• FOR SALE: Set of 4 Michelin tires, size 215/55 R17 @ 9,000 miles - \$400.00 or best offer. Hoyt compound bow, arrows with tips & broad heads, case included - \$450.00 or best offer. Please leave a message or text at 607-329-8633.

• FOR SALE: Tow behind lawn thatcher - \$30.00. Tractor Supply tow behind lawn cart - \$75.00. 30 gallon rain barrel - \$20.00. Old Craftsman self propelled lawnmower, runs good - \$25.00. For photos or informa-

tion text 607-382-9492 or call and leave a message.

• FOR SALE: Craftsman 10 inch table saw, excellent condition - \$100.00. Call 607-583-2193.

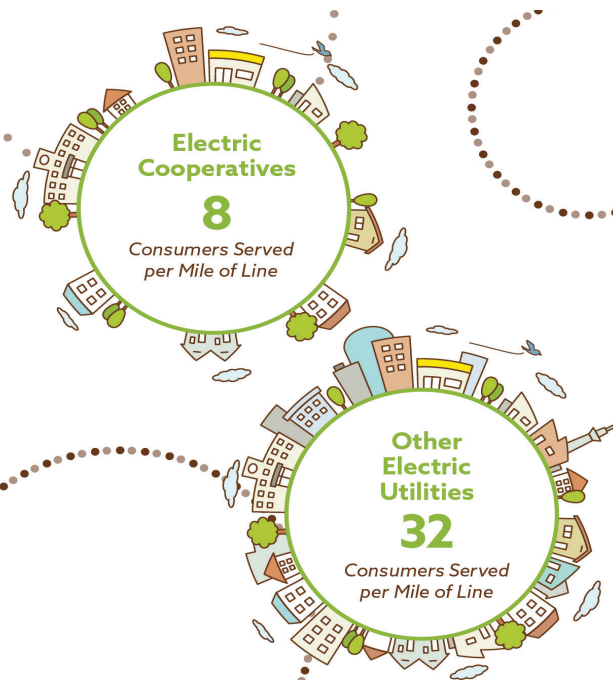
• FOR SALE: 1989 J.D. Model 318 lawn tractor, 511 hours - \$3500.00. Fairbanks Morris hit & miss engine - \$550.00. Call 607-583-4698.

• WANTED: Used 60" to 72", 3 point york rake. Call 716-257-3411.

ELECTRIC CO-OP SERVICE DENSITY compared to OTHER ELECTRIC UTILITIES

Electric cooperatives maintain more power lines per consumer than other types of electric utilities.

Even though we serve fewer consumers per mile of line, we will always go the extra mile for our members.



Third Party Notification: In accordance with the provisions of the New York Codes, Rules and Regulations, Steuben Rural Electric Cooperative is required to permit a residential member to designate, in writing a third party to receive a copy of every notice of disconnectedness of service to the member, provided that such third party indicated in writing a willingness to receive these notices, please contact the main office at (607) 776-4161 for a copy of the applicable paperwork. 851702

The Trading Post Rules: Only members of SREC may submit ads. Ads must be submitted by the 26th of July in order to be published in the February newsletter. You can submit ads by mailing them to Steuben Rural Electric Cooperative, 9 Wilson Ave, Bath, NY 14810 or by email to kcleveland@steubenrec.com. All ads must be typed or printed clearly. Include your name and account number on all submissions. Ads are not allowed to be automatically repeated. They must be resubmitted for each issue. The cooperative reserves the right to edit material for content and/or space as necessary. Ads are published on a first-received basis with no guarantee your ad will appear.

Disclaimer: Items in the Trading Post are published at the request of our members. SREC does not endorse, recommend or assume any responsibility for the products advertised.

2025 HOLIDAY CLOSINGS

May 26 - Memorial Day
July 4 - Independence Day
September 1 - Labor Day
October 13 - Columbus Day
November 11 - Veterans Day
November 27 - Thanksgiving
November 28 - Thanksgiving
December 24 - Christmas Eve
December 25 - Christmas Day

BOARD OF DIRECTORS

District 1 - James McCormick
District 2 - Janice Hoad
District 3 - Edward Borkowski
District 4 - Walter Longwell
District 5 - Gerald Chase Jr.
District 6 - Gordon Foster
District 7 - Robert Nichols
District 8 - Randy Stankey
District 9 - William Moss III



\$10 IS HIDING IN THIS ISSUE

Each month, we hide five account numbers within the text of the newsletter. If you find your account number, contact the Cooperative by the end of the current month at 607-776-4161 to receive a \$10 credit on your electric bill.

